

## STATE OF THE ART SWITCHGEAR



Why is NSBSL a great place to work?



## ELECTRICAL SCHOLARSHIP AND CO-OP

## ADVANCED CONTROL SYSTEMS



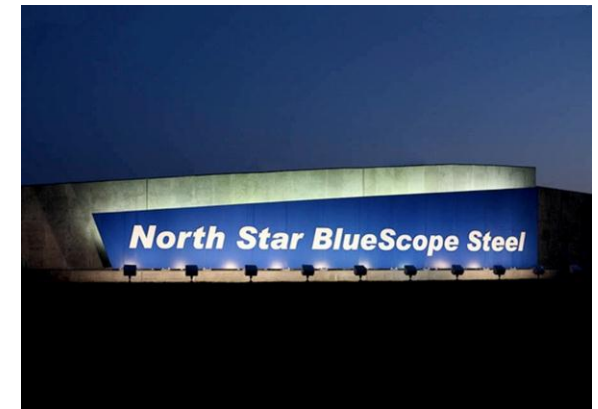
- Self-empowered work force
- Team-oriented environment
- Excellent benefits
- Competitive salaries
- Opportunity for advancement

## FOR MORE INFORMATION

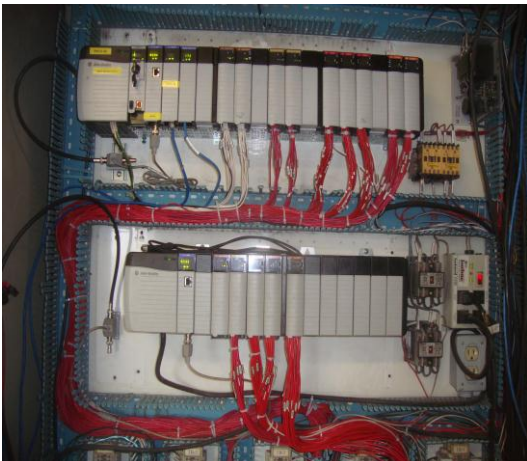


Scan here to learn more about NSBSL

North Star BlueScope Steel  
6767 County Road 9  
Delta, Ohio 43515  
Phone: (419) 822-2200  
[www.northstarbluescope.com](http://www.northstarbluescope.com)



## THE LATEST PLC TECHNOLOGY



## SCHOLARSHIP OUTLINE

### First 2 Years

- Exposure to Operations
- Work Part Time (~20 hours/week)
- Attend College Full Time (>12hours course load)
- Exposure to different production areas to learn about that area and its contribution to the overall business
- Co-op will be assigned a Mentor during this time to help guide and teach the co-op.
- After year 1 the Co-op will start migrating towards more technical roles.
- Must complete Associates Degree to advance to year 3

### Year 3

- Raise in salary and change in status contingent upon:
  - Completed Associate Degree
  - Performance, attendance, and job fit standards
  - Shown an aptitude for electrical maintenance (hands on work, troubleshooting, problem solving, basic grasp of plc's, etc.)
- Full time with benefits, but not bonus or profit sharing
- Start 8 month Department Rotations
- Performance Reviews at the end of each rotation

### Year 4

- Eligible for weekly bonus and profit sharing contingent upon continued high performance
- Continue with 8 month Department Rotations

### Year 5

- Promoted to entry level electrical technician
- Assigned to a department
- Advancement criteria will be determined for each individual based on their skill level

## ELECTRIC ARC FURNACE



## SLAB CASTING



## ROLLING MILL



## OPPORTUNITIES

- Learning opportunities are endless
  - PLC and HMI programming
  - Troubleshooting
  - Project management
  - Construction
- Future advancement opportunities
  - Advance locally or transfer to one of our many other BlueScope facilities.
- Exceptional training that is ongoing
  - On-the-job
  - Offsite technical training

## EXPECTATIONS

- Co-op will complete an associate degree by the end of the first two years with a strong urge to work toward a bachelors' degree
- No strings attached – Probationary employee for the duration of the scholarship.
- GPA – Must maintain a C or higher for each class
- Utilize NWSCC or Owens for associate degree.
  - Other colleges will be considered and approved if it is determined that their curriculum and cost is acceptable.